

# Understanding Homelessness among Migrants to Thunder Bay using Machine Learning

Chandreen Ravihari<sup>1</sup>, Vijay Mago<sup>2</sup>, Rebecca Schiff<sup>3</sup>, and Ravi Gokani<sup>4</sup>

cliyanag@lakeheadu.ca, vmago@lakeheadu.ca, rschiff@lakeheadu.ca, rgokani@lakeheadu.ca  
Lakehead University, Canada

**Event:** 5h Annual Canadian Homelessness Data Sharing Conference,  
Data That Makes A Difference, University of Calgary.  
May 18<sup>th</sup>-19<sup>th</sup>, 2022

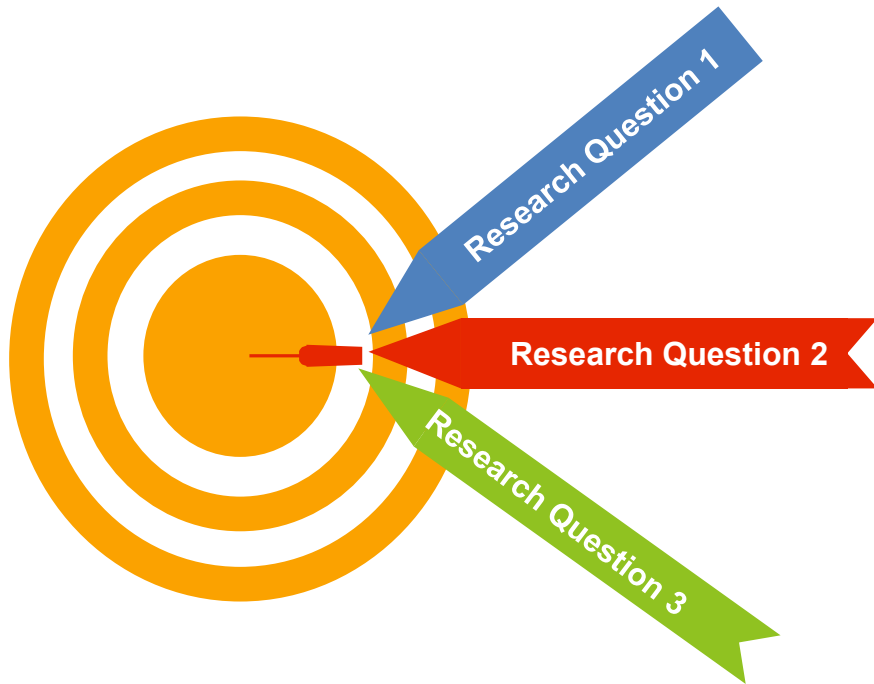
# Acknowledgement

- This is a SSHRC PEG-funded (2021-2022) collaborative project between Lakehead University (LU) and the District of Thunder Bay Social Services Administration Board (TBDSSAB), the largest social services agency in the District of Thunder Bay. SSHRC project # 892-2021-0014

# Structure of the Presentation

- Research Questions
- The Dataset
- Methodology
  - Data Collection
  - Stages of Development
  - Data Cleaning and Preparation
  - Feature Selection
  - Synthetic Data
  - Machine Learning Models
- Results
- Discussion

# Research Questions



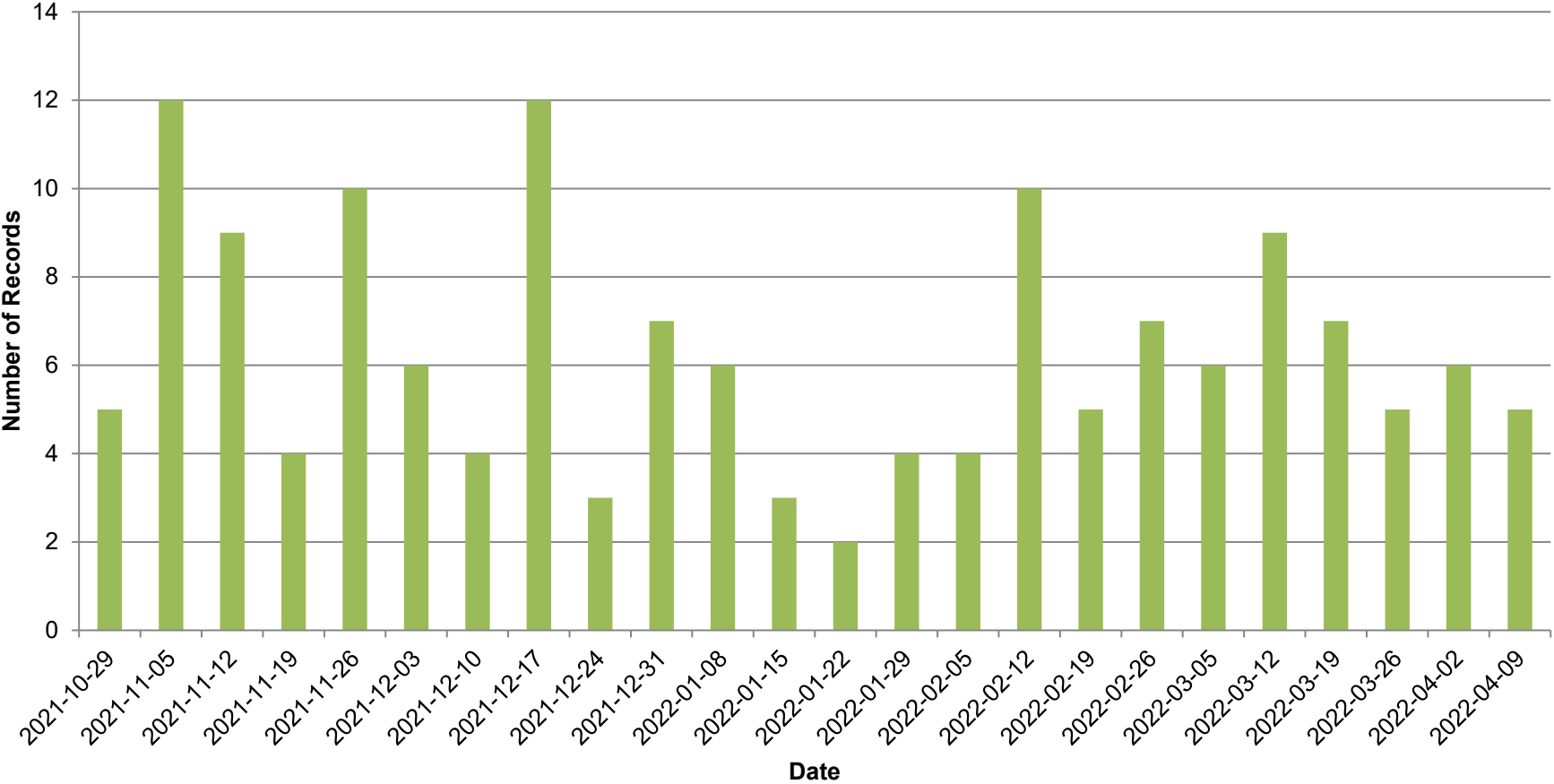
- Research Question 1:
  - What **factors** predict if an individual **stays or leaves** Thunder Bay?
- Research Question 2:
  - If an individual stays, **how long** are they likely to stay?
- Research Question 3:
  - What **factors** predict **stay duration**?

# The Dataset: Features used for the Study

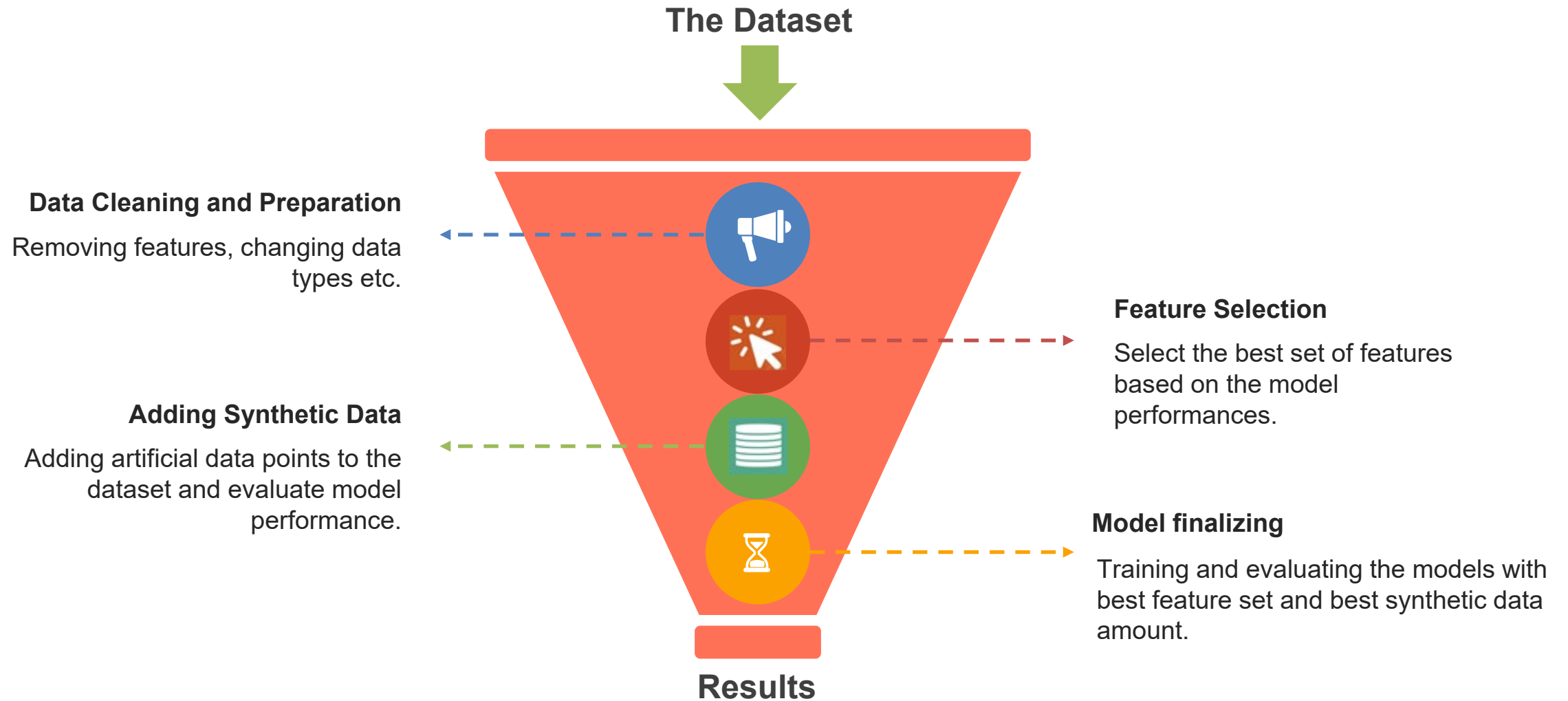
- The dataset was collected from homeless adults through a survey conducted every Friday or Saturday at homeless shelters from 29<sup>th</sup> October 2021 to 9<sup>th</sup> April 2022
  - Shelter House, Salvation Army, Urban Abbey
  - Data collected by Graduate Student Research Assistants from the School of Social Work and Department of Health Sciences
- The shelter stay details (booked in, booked out dates) were gathered from TBDSSAB (HIFIS) databases
- Total number of records : 151

# Methodology: Data Collection over Time

Total Records over Time



# Methodology: Stages of Development



# Methodology: Data Cleaning and Preparation

Total number of features in the dataset	33
Number of features used for the study	28
Removed features	First Name - Irrelevant
	Last Name - Irrelevant
	At what age did you come for schooling?– High NULL rate
	What type of schooling brought you here? – High NULL rate
	(Do you feel you can't go back to your community for any other reasons?) If so, what are the reasons? – Short Text
Generated features	Current Stay (Yes/No)
	Stay Duration
Numeric to categorical conversion	Age: 3 categories Stay Duration : 3 categories



# Methodology: Data Cleaning and Preparation

## Predictive Class Label Generation

- Predicting variable: **Current stay (yes/no)**
- if the duration not at shelters  $\geq 8$  weeks;  
    stay=no  
    else  
    stay =yes
- Predicting variable: **Stay duration**
- Predictive classes : 03 ( 1-20, 21-58, 59-245 days)
- Based on frequency distribution

# Methodology: Best Feature Selection

Factor Selection was conducted using two approaches [1]

1. A filter-based approach
  - Using a **statistical test**, measure the relevance of features by their **correlation with dependent variable** (current stay/ stay duration)
1. A Wrapper-based approach
  - Use a **machine learning algorithm to select the most relevant subset of features** based on the performance of a ML model training.

[1] <https://www.datasciencesmachinelearning.com/2019/10/feature-selection-filter-method-wrapper.html>

# Methodology: Adding Synthetic Data

- Performance of each model was measured by adding synthetic data from 1% to 50% of the total dataset.

# Methodology: Types of Models Developed

1. Decision Tree
2. Support Vector Machine (SVM)
3. K-Nearest Neighbor (KNN)
4. Naive Bayes
5. Random Forest
6. Logistic Regression
7. Multi-Layer Perceptron (MLP)
8. Gradient Boosting Tree

# Results: RQ1 - Factors predict if an individual stays or leaves Thunder Bay?

26th February

Data Points: 119

## Best Predictors

- Have you been hospitalized in Thunder Bay?
- Have you received any support for drug and/or alcohol use recently?
- Do you have family or friends in Thunder Bay?
- Did you find employment when you arrived in Thunder Bay?

26th March

Data Points: 140

## Best Predictors

- Have you been hospitalized in Thunder Bay?
- Do you have family or friends in Thunder Bay?
- Was your family or were your friends a reason you came to Thunder Bay?
- Was mental health support a reason you came to Thunder Bay?
- What is the highest level of education you have completed?

9th April

Data Points: 151

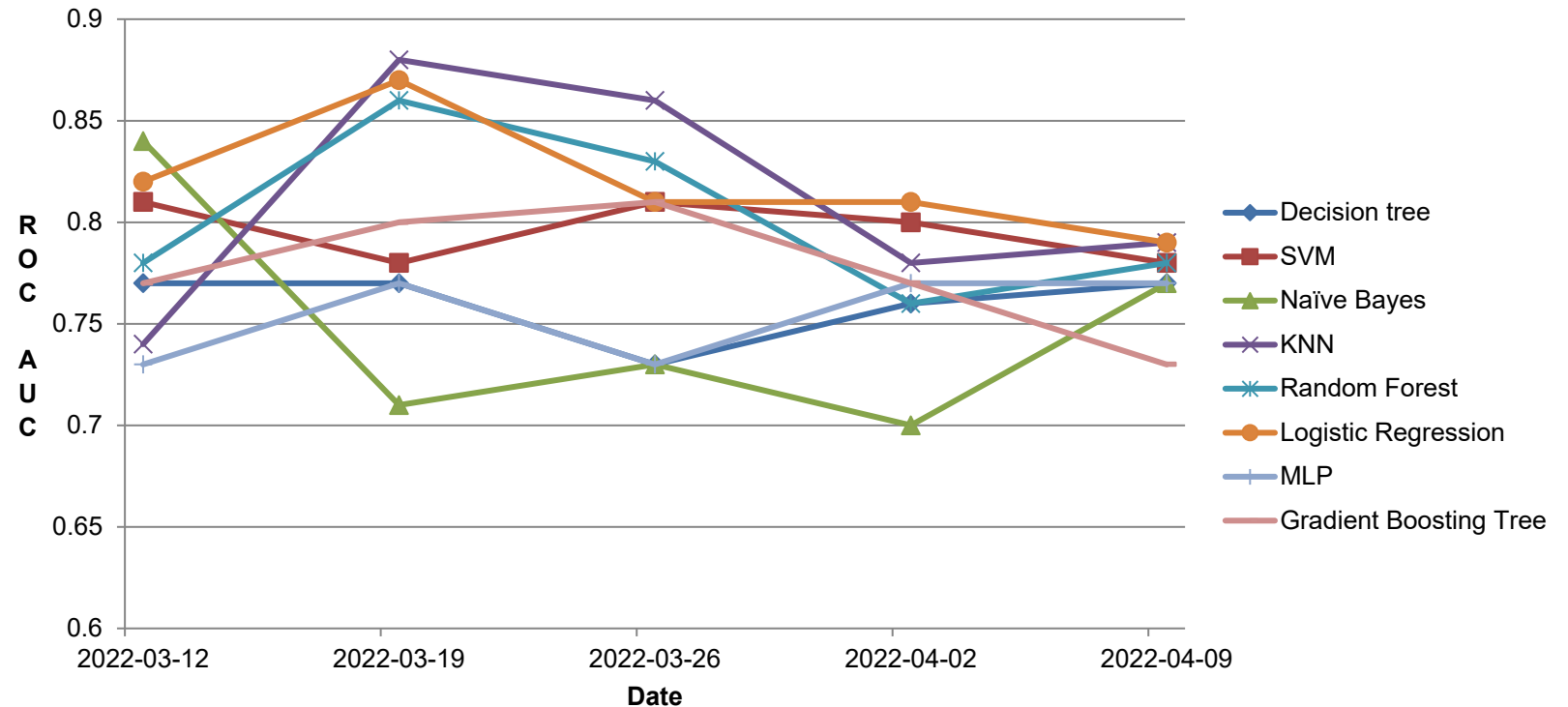
## Best Predictors

- Do you have family or friends in Thunder Bay?
- Was education/school a reason you came to Thunder Bay?
- Was your family or were your friends a reason you came to Thunder Bay?
- What is the highest level of education you have completed?
- Have you been hospitalized in Thunder Bay?

# Results: RQ2 - If an individual stays, how long are they likely to stay?

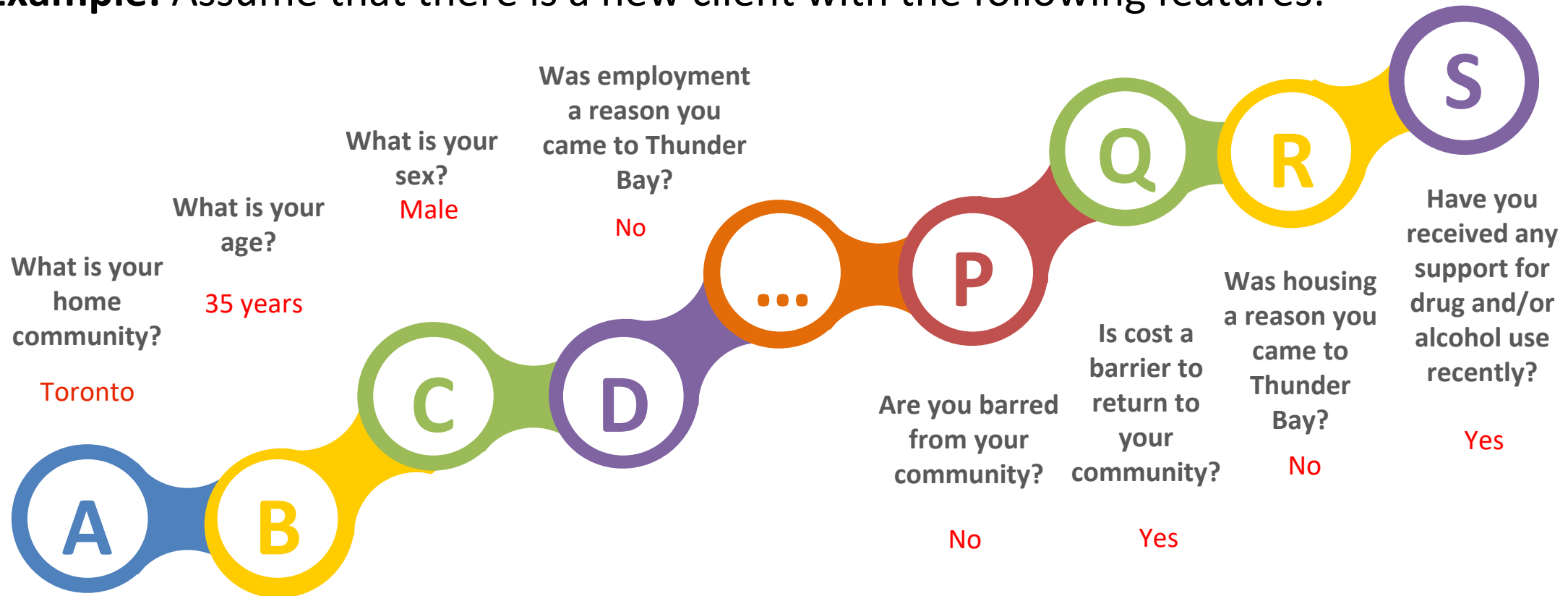
- Performance of each model was tested with the best number of features and best synthetic data percentage.
- Logistic Regression performed well over time.

Performances of different models over time



# Results: RQ2 - If an individual stays, how long are they likely to stay?

**Example:** Assume that there is a new client with the following features:



The most accurate model predicted : 21-58 days as the stay duration

# Results: RQ3 - What factors predict stay duration?

26th February

Data Points: 119

## Best Predictors

- Is cost a barrier to return to your community?
- What is your age?
- Have you received any support for drug and/or alcohol use recently?
- Was support for drug and/or alcohol use a reason you came to Thunder Bay?
- Do you have a Status Card?

26th March

Data Points: 140

## Best Predictors

- What is your age?
- What is your sex?
- Do you have band membership?
- Was support for drug and/or alcohol use a reason you came to Thunder Bay?
- Do you have a Status Card?
- Have you received any support for drug and/or alcohol use recently?

9th April

Data Points: 151

## Best Predictors

- What is your ethnicity?
- Do you have band membership?
- What is your age?
- Do you have a Status Card?
- Was support for drug and/or alcohol use a reason you came to Thunder Bay?
- Have you received any support for drug and/or alcohol use recently?



# Discussion: Key Findings

- The important **factors predicting the stay or leaves** of an individual were found to be:
  - Have you been hospitalized in Thunder Bay?
  - Do you have family or friends in Thunder Bay?
  - Was your family or were your friends a reason you came to Thunder Bay?
- The important **factors predicting the stay duration** of an Individual were found to be:
  - What is your age?
  - Was support for drug and/or alcohol use a reason you came to Thunder Bay?
  - Have you received any support for drug and/or alcohol use recently?
  - Do you have a Status Card?

# Discussion: Limitations

- ❑ Data scarcity
- ❑ Stability of results with more data
- ❑ Cross-sectional (snapshot) vs. Longitudinal study

# **Discussion:** Implications & Next Steps

- ❑ Analysis of the interview data (qualitative analysis)
- ❑ TBDSSAB to use forthcoming report in policy discussions

THANKS!

# Appendix

# Survey Questions

- What is your home community?
- What is your previous community?
- What is your age?
- What is your sex?
- What is your ethnicity?
- What is the highest level of education you have completed?
- Do you have a Status Card?
- Do you have band membership?
- Was education/school a reason you came to Thunder Bay?
- Do you have family or friends in Thunder Bay?
- Was your family or were your friends a reason you came to Thunder Bay?
- Have you been incarcerated or to jail?
- Was court a reason you came to Thunder Bay?
- Did a fire, flood, or evacuation crisis force you to leave your home community?
- Was a medical appointment for yourself or a family member a reason you came to Thunder Bay?
- Have you been hospitalized in Thunder Bay?

# Survey Questions

- Was employment a reason you came to Thunder Bay?
- Did you find employment when you arrived in Thunder Bay?
- Are you currently employed?
- Was housing a reason you came to Thunder Bay?
- Was mental health support a reason you came to Thunder Bay?
- Have you received any mental health support recently?
- Was support for drug and/or alcohol use a reason you came to Thunder Bay?
- Have you received any support for drug and/or alcohol use recently?
- Are you barred from your community?
- Is cost a barrier to return to your community?
- Do you feel that you can't go back to your community for personal reasons?
- Do you feel you can't go back to your community for any other reasons?